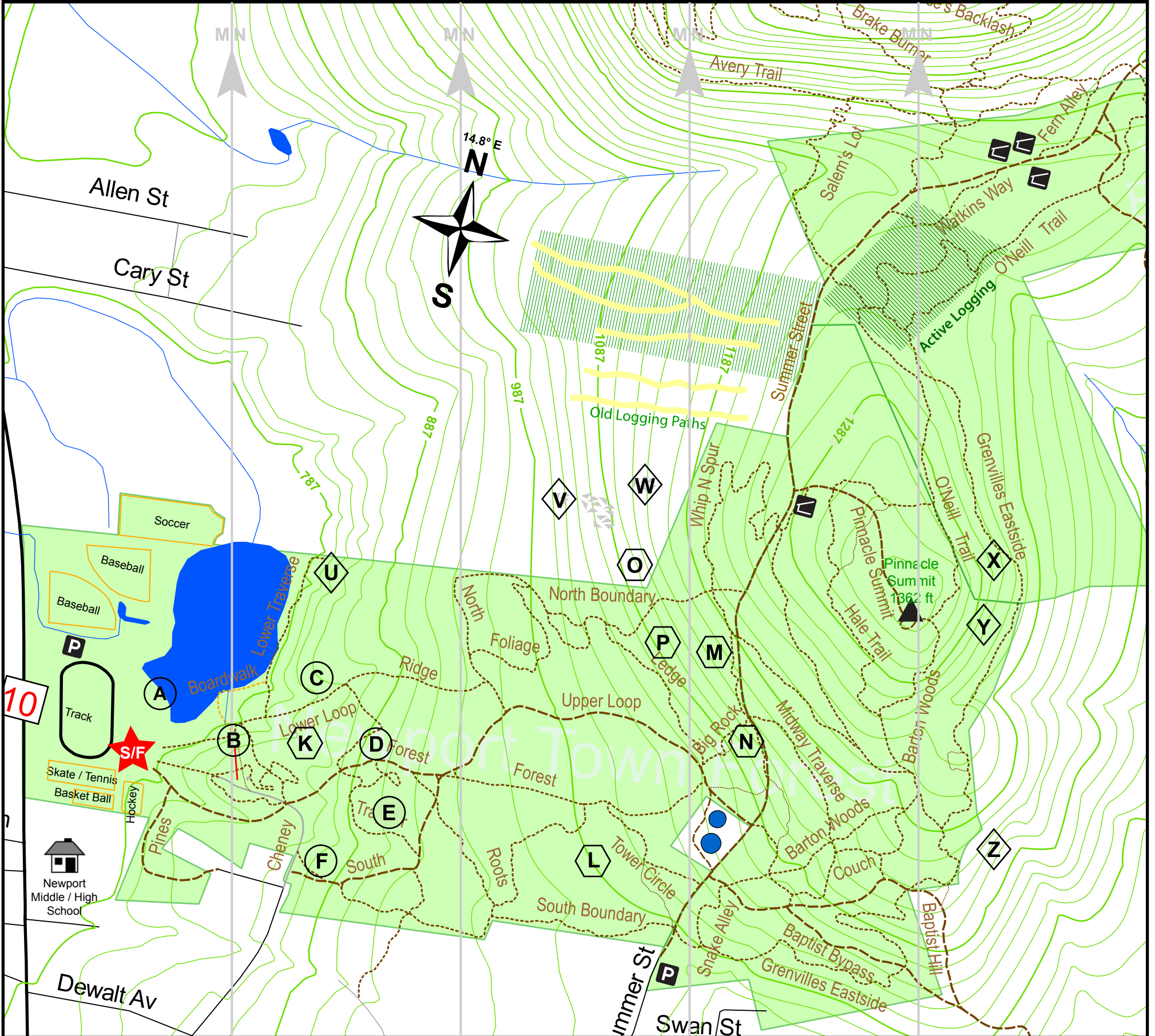


2015 Winter Carnival Orienteering Challenge



LEGEND

- ▲ Summit
- Water Tower
- - - Trail - Single Track
- GPS Trail Data: Ryan O'Brien
- P Parking
- Stream
- - - Trail - Double Track
- Cartographer: Ryan O'Brien
- Cave
- Water Body
- Dirt Road
- GRANIT DATA, NAD 83
- Historic Foundation
- Conservation Area
- Paved Road
- Contour Interval: 20 ft
- ★ Start / Finish
- 0 ————— 1/2 mi
- Date: Feb. 9, 2015

A	B	C	D	E	F	Novice (A-F)
K Ravine	L Go Deep	M Ledge	N Boulder	O Cliff	P Ledge	Standard (A-P)
U Steep	V Boulder Field	W Boulder Field	X Look Up	Y Steep	Z Steep	Adventure (A-Z)

Please do not go into the woods alone! Call Ryan at 603-477-9968 for navigational help.